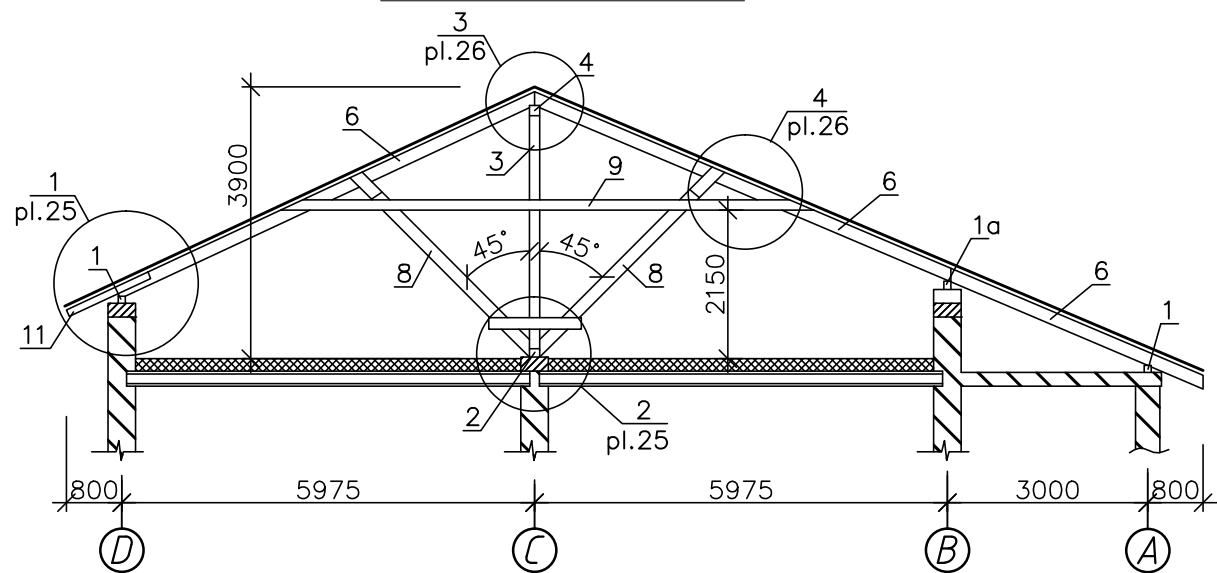
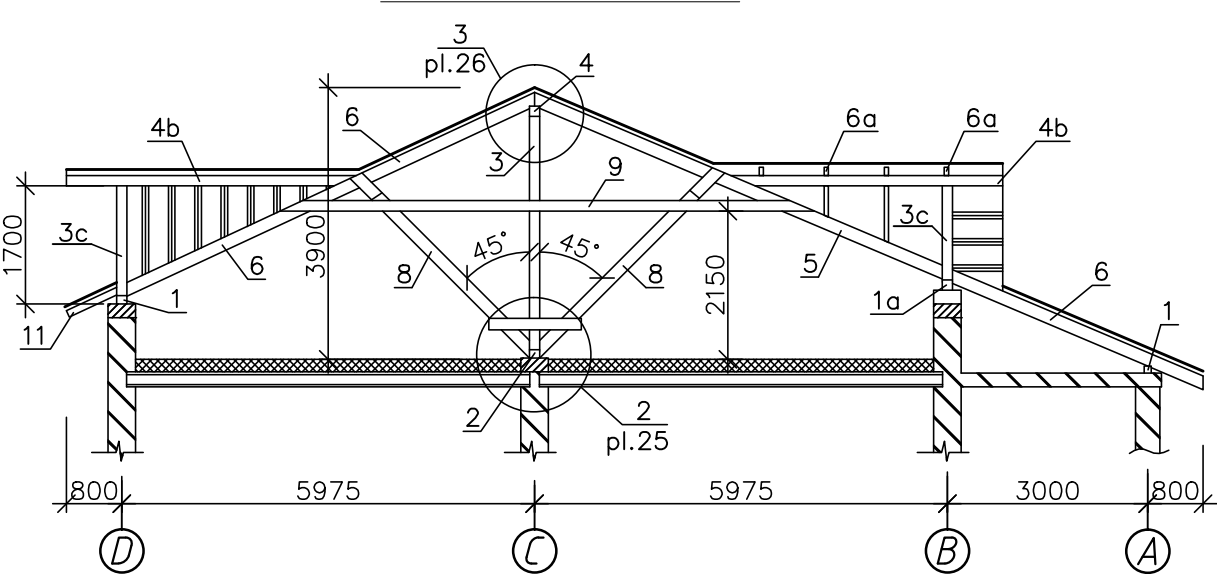


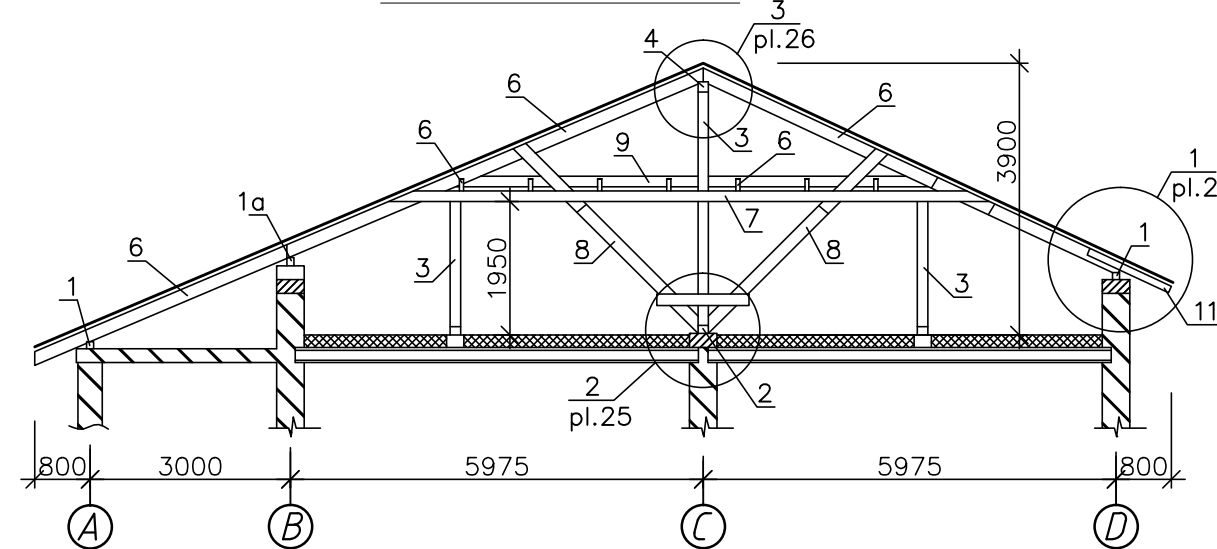
Sectiune 4 - 4, sc. 1:100



Sectiune 5 - 5, sc. 1:100



Sectiune 6 - 6, sc. 1:100



Poz	Denumirea element	Sectiunea	Lungimea totala m.l	Volum m <sup>3</sup>
1	Cosoroaba	150x120(h)	52.4	0.943
1a	Cosoroaba	150x150	14.4	0.324
1b	Cosoroaba	100x100	55.3	0.553
2	Talpa	150x120(h)	13.2	0.238
2a	Talpa, l=600	100x100	3.6	0.036
3	Pop, l=3400	150x150	20.9	0.47
3a	Pop	100x100	16.7	0.167
3b	Pop, l=2000	150x100	2.0	0.03
3c	Pop, l=1600	150x60	4.8	0.043
4	Grinda de coama	150x150	15.7	0.353
4a	Grinda de coama	100x150(h)	16.2	0.243
4b	Grinda de coama	60x180(h)	13.0	0.14
5	Grinda diagonala	60x180(h)	4.10	0.443
6	Caprior	60x180(h)	415.2	4.484
6a	Caprior	50x150(h)	44.8	0.336
7	Grinda suport	120x120	13.5	0.194
8	Pop inclinat	60x180(h)	93.6	1.01
9	Cleste	2x50x150(h)	238.6	1.789
10	Contravintuire	50x150(h)	16.2	0.121
11	Caprior de stresina, l=1300	50x100(h)	102.7	0.513
12	Eclise l=2000	2x50x100(h)	52.0	0.26
13	Pana, l=700	40x180(h)	95.2	0.685
14	Gratar	50x50	1476.2	3.69
15	Scindura	25x100(h)	79.0	0.197
16	Clesti, l=1400	2x50x150(h)	36.4	0.273
17	Pana, l=400	150x150	0.8	0.018

				Obiect Nr: 18-2020-SAC			
				Acoperis sarpanț si anexa neincalzita la sediul primariei s. Borogani, r. Leova			
				Beneficiar: primaria s. Borogani			
				Acoperis sarpanț si anexa neincalzita	FAZA	PLANȘA	PLANȘE
ISP			12.20		PE	24	
Executat			12.20	Plan capriori Sectiuni 4 - 4, 5 - 5, 6 - 6			